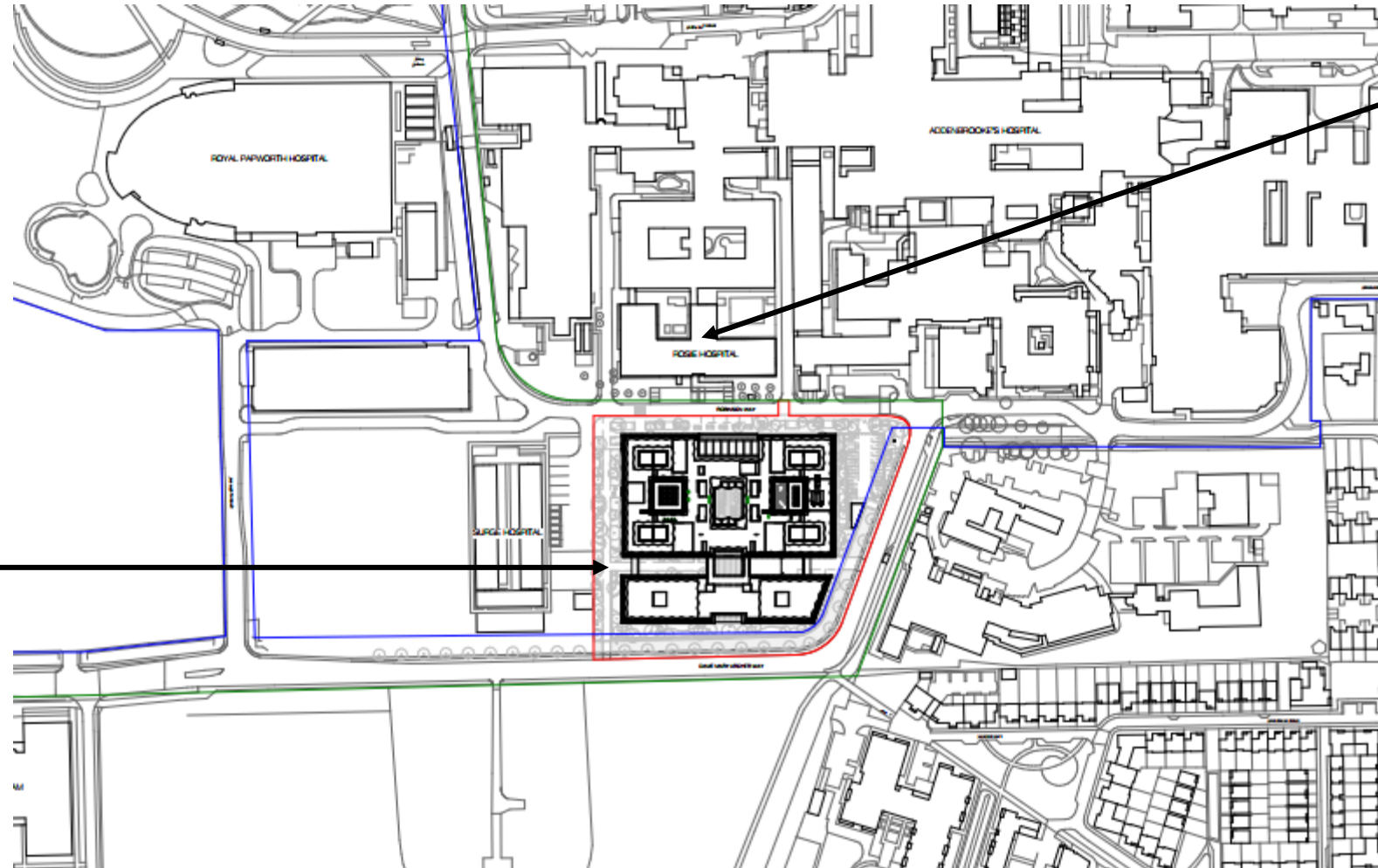


21/04336/REM

Reserved Matters application for the new Cambridge Children's
Hospital, Cambridge Biomedical Campus

Drawing Pack

Site Location Plan



Rosie Hospital

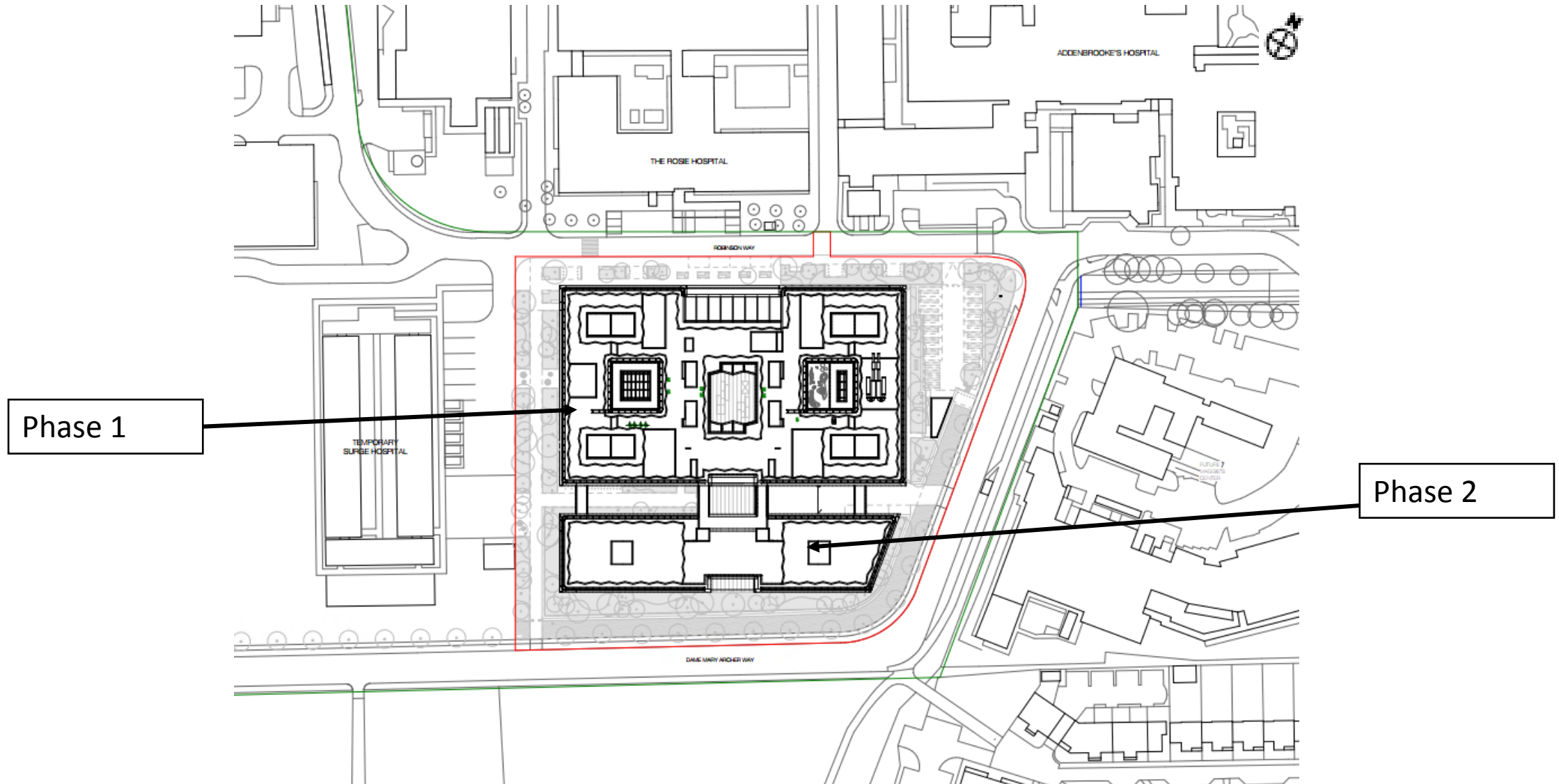
Page 2

Cambridge
Children's
Hospital



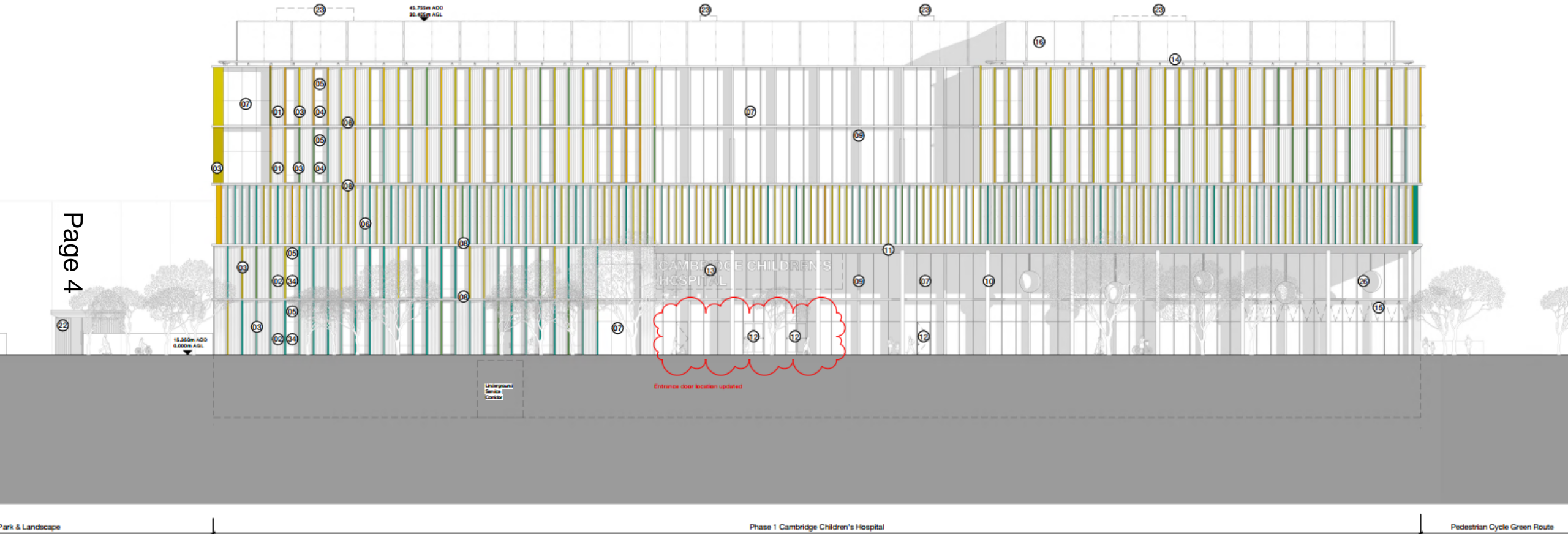
Site Plan

Page 3



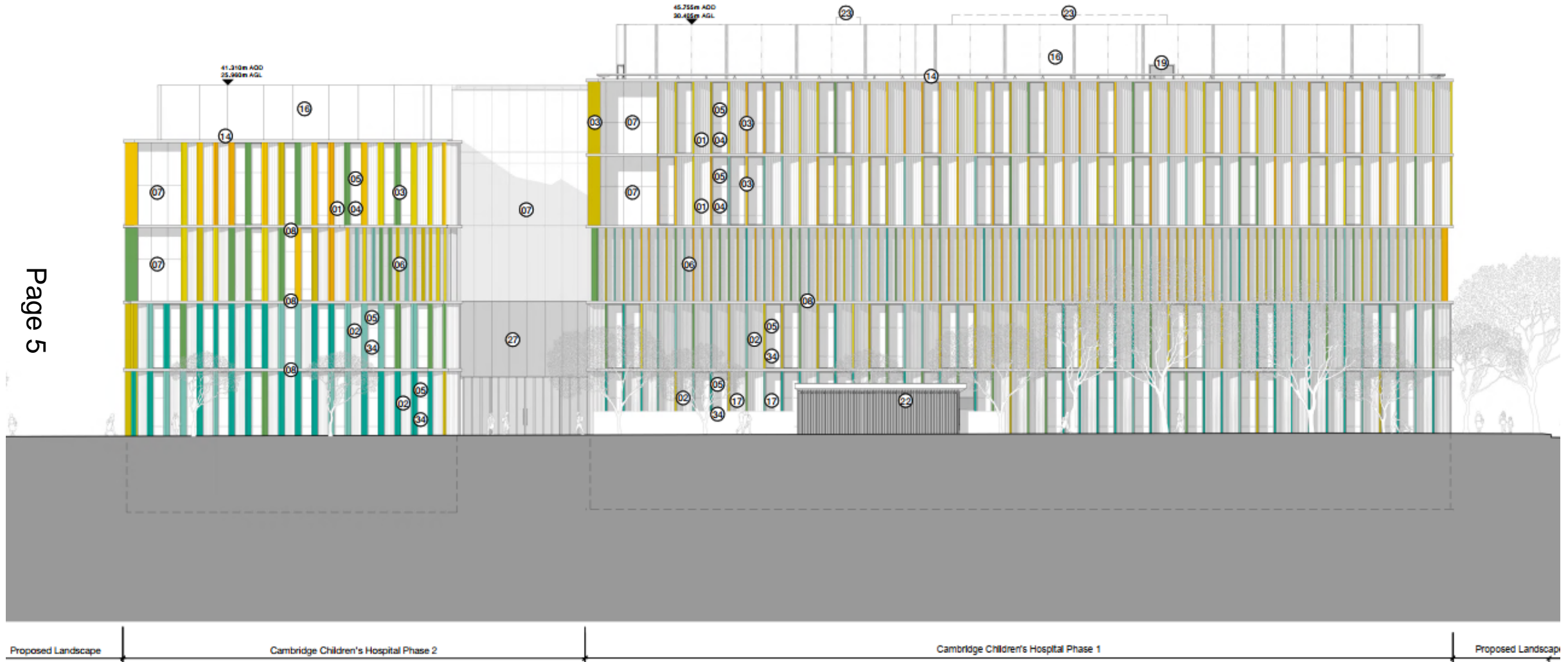
North Elevation (from Robinson Way)

Page 4

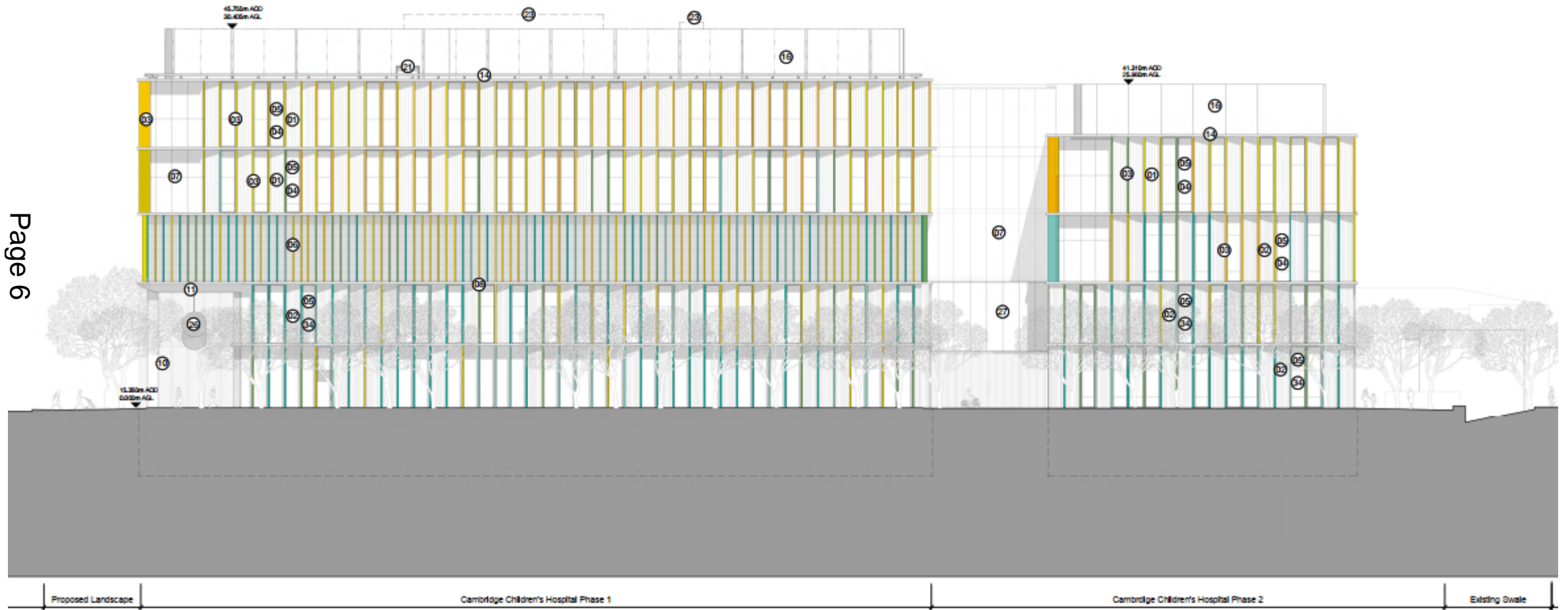


East Elevation

Page 5

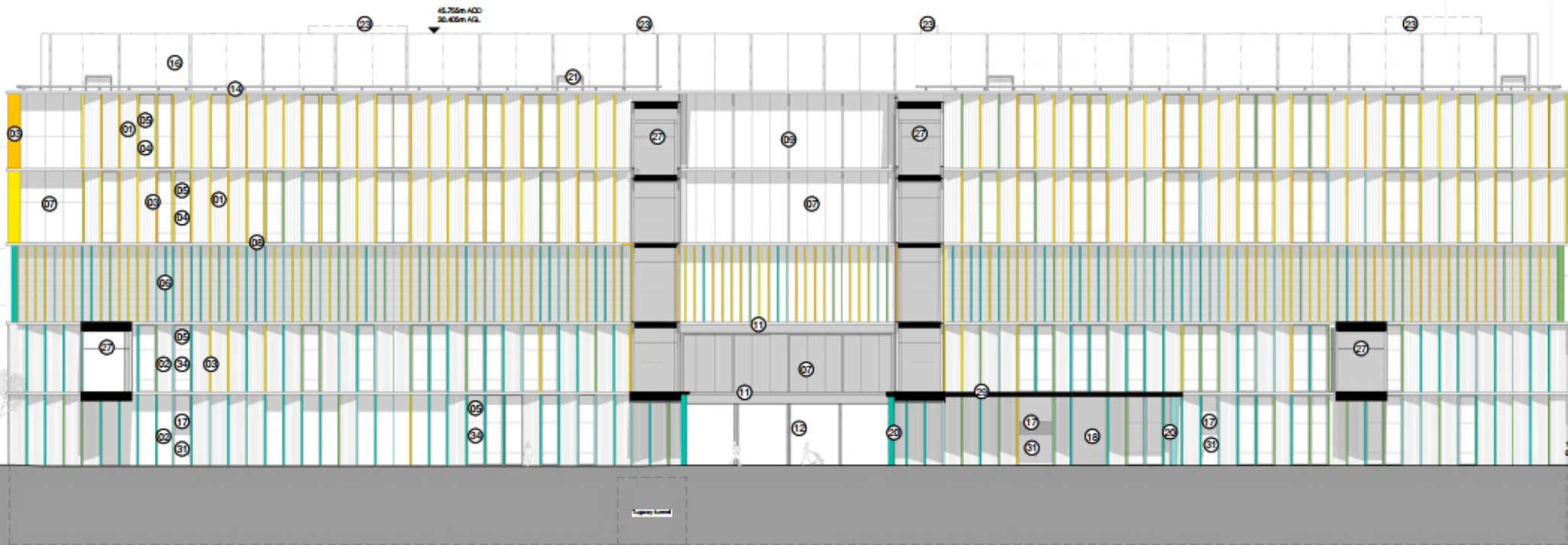


South Elevation (from Dame Mary Archer Way)



West Elevation

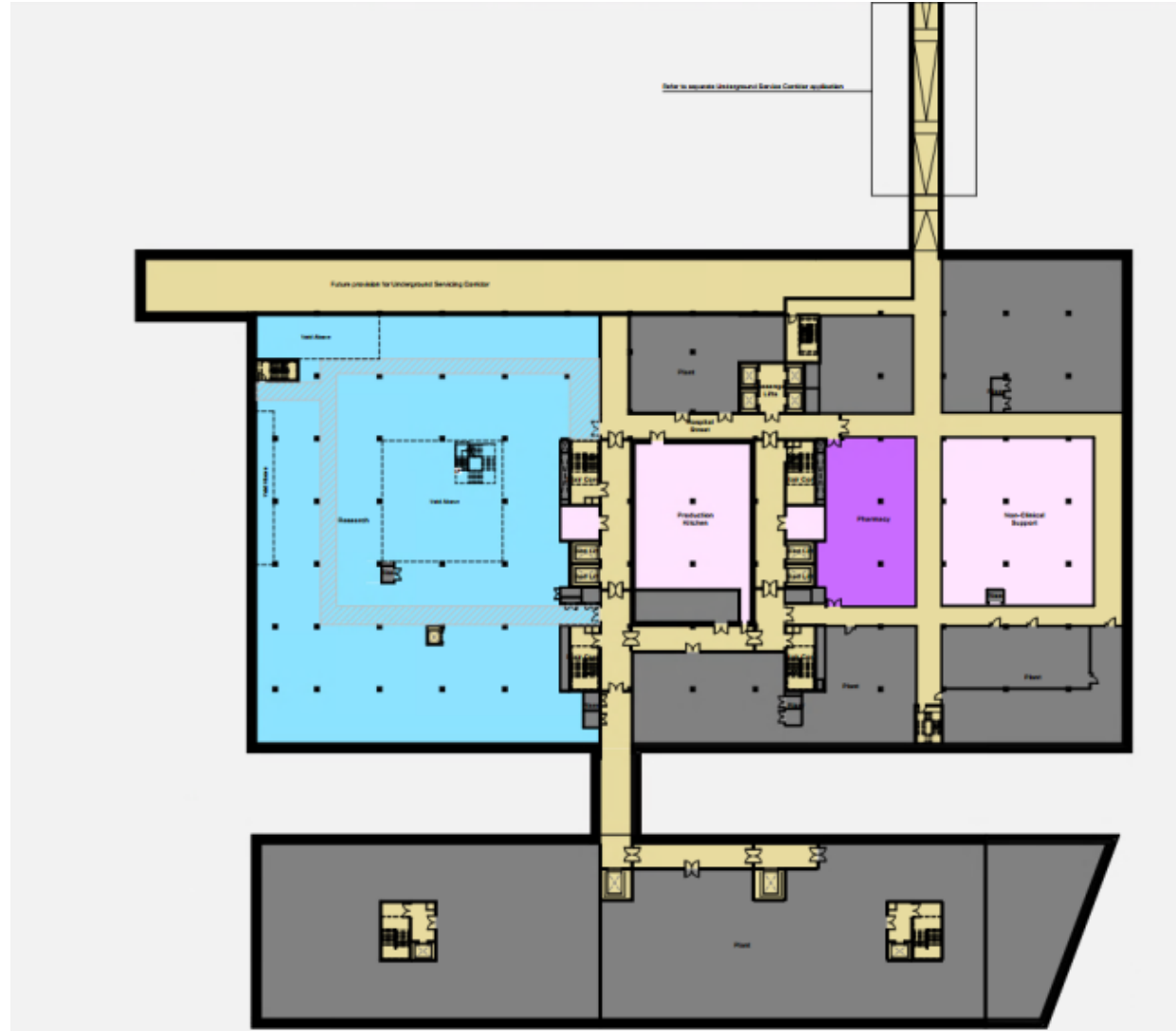
Page 7



Proposed Basement Plan




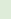







By Department Legend

- Pharmacy
- Non-Clinical Support
- Primary Laboratories
- Circulation
- Plant



Proposed Ground Floor Plan (Level 1)

By Department Legend

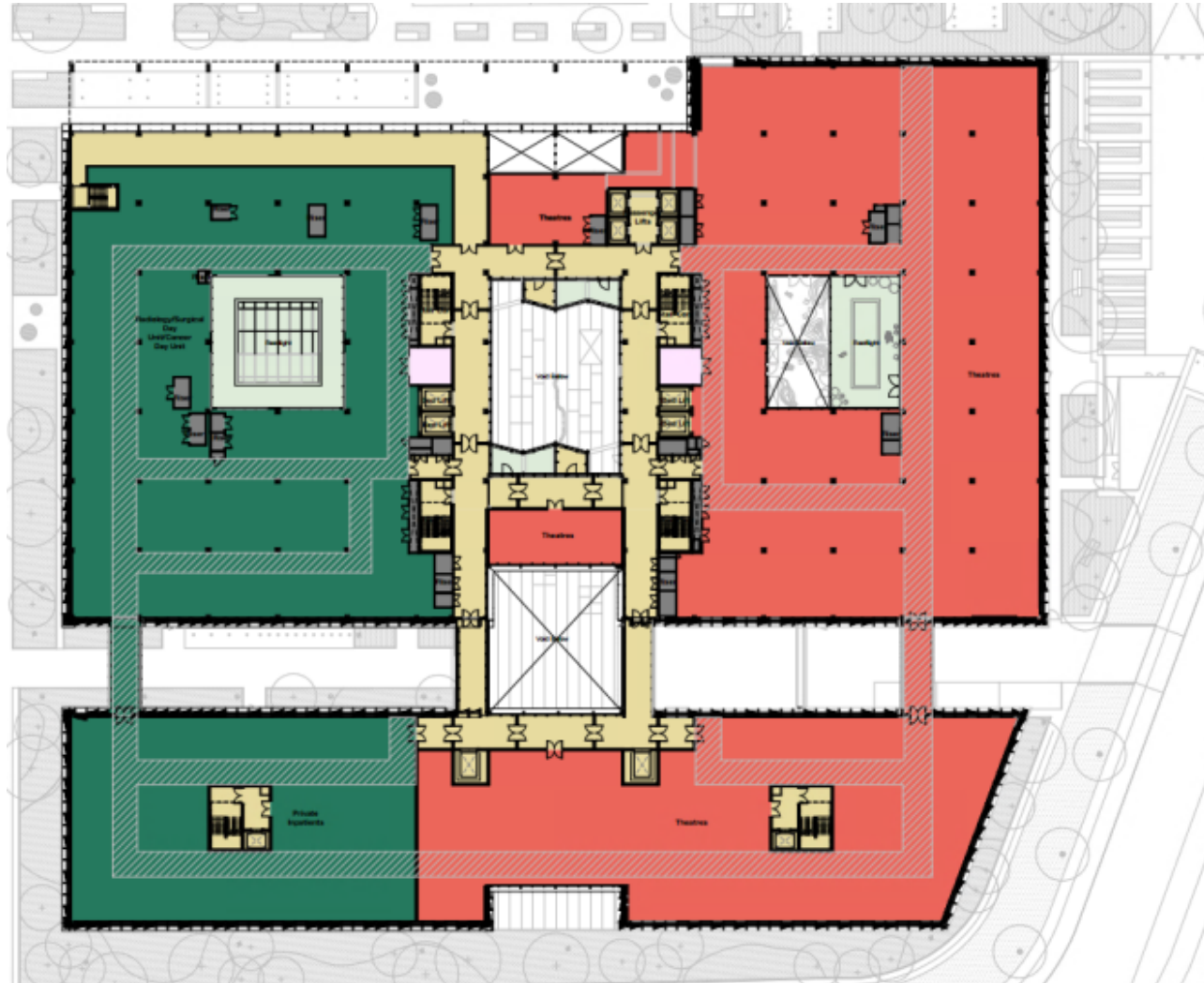
-  Entrance
 Staff Hub
 External Space
 Pharmacy
 Non-Clinical Support
 Mortuary
 Primary Laboratories
 School
 PICU/Critical Care
 Circulation
 Plant



Proposed 1st Floor Plan (Level 2)

By Department Legend

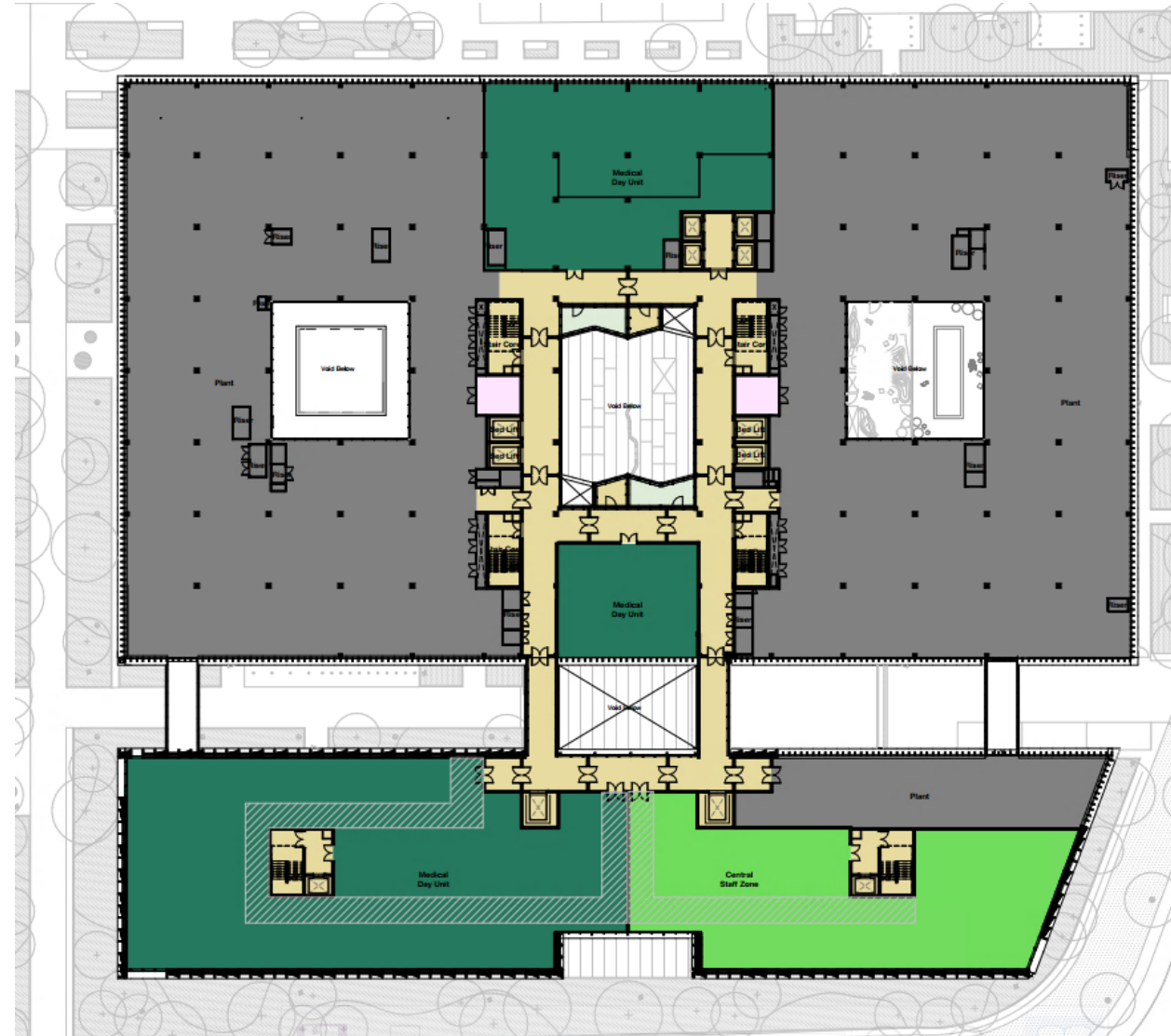
- External Space
- Non-Clinical Support
- Day Case Wards
- Theatres
- Circulation
- Plant



Proposed 2nd Floor Plan (Level 3)

By Department Legend

- External Space
- Non-Clinical Support
- Day Case Wards
- Ward Core
- Circulation
- Plant

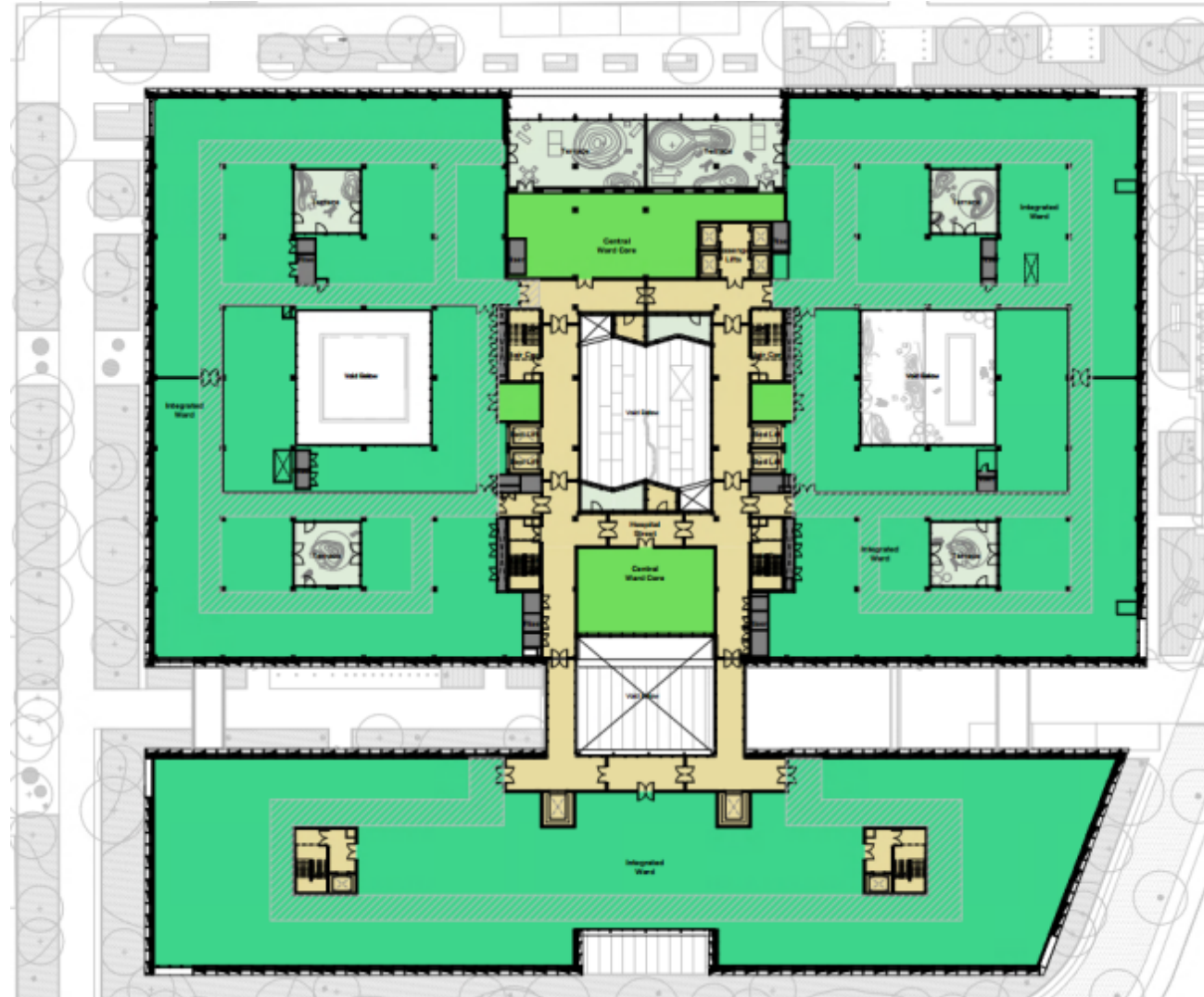


Proposed 3rd Floor Plan (Level 4)

By Department Legend

- External Space
- Integrated Ward
- Ward Core
- Circulation
- Plant

Page 12

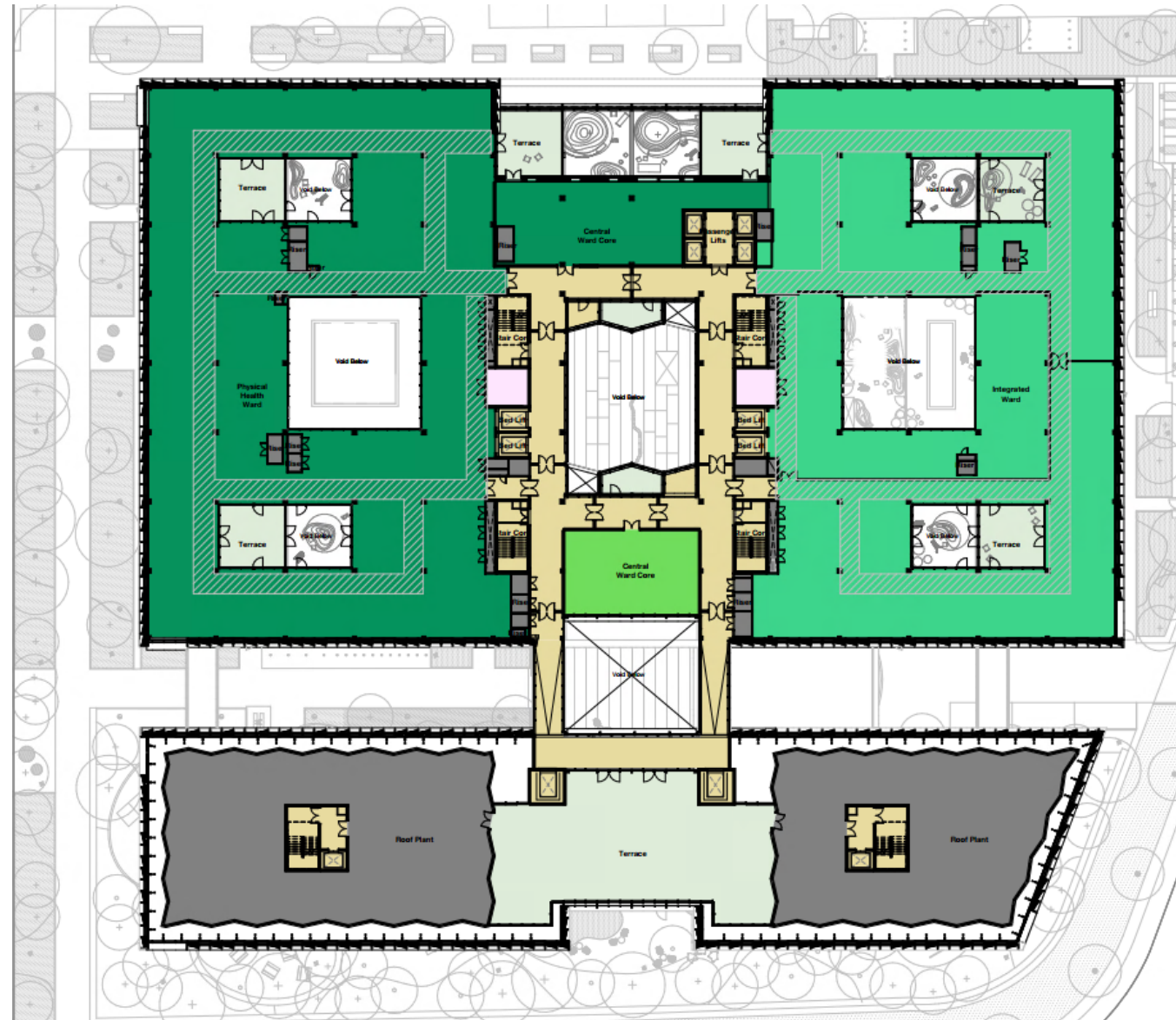


Proposed 4th Floor Plan (Level 5)

By Department Legend

- External Space
- Non-Clinical Support
- Physical Ward
- Integrated Ward
- Ward Core
- Circulation
- Plant

Page 13

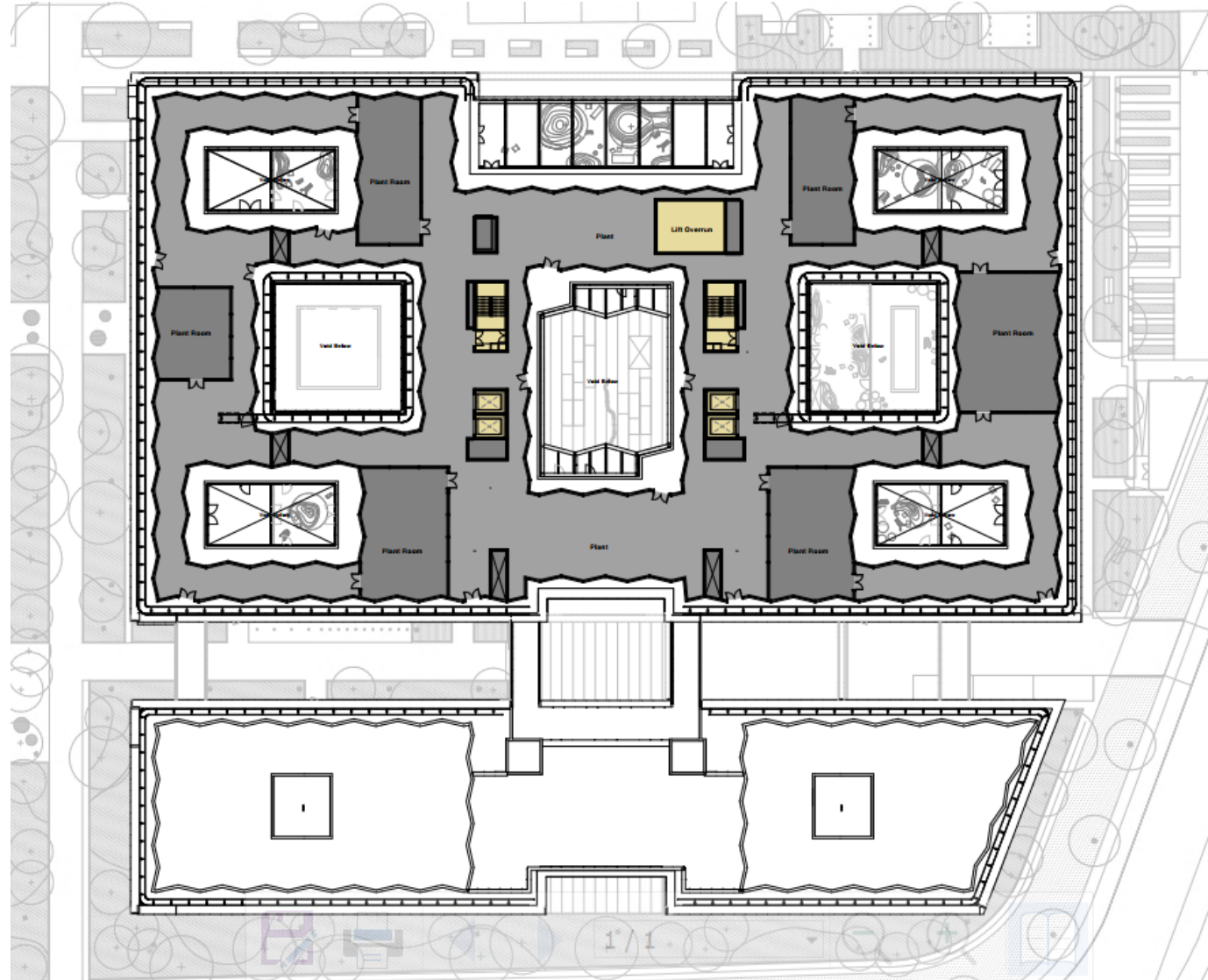


Proposed 5th Floor Plan (Level 6)

By Department Legend

- Roof Plant
- Circulation
- Plant

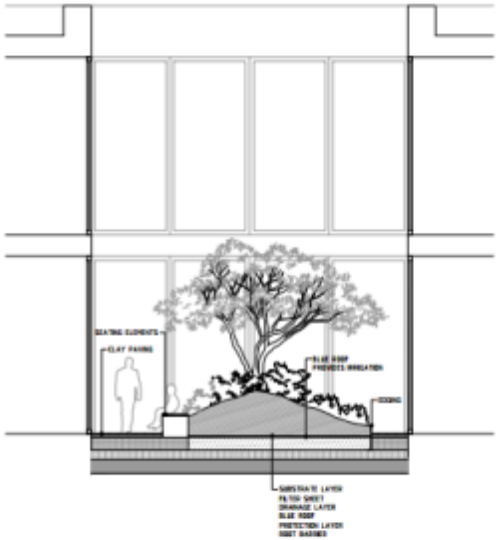
Page 14



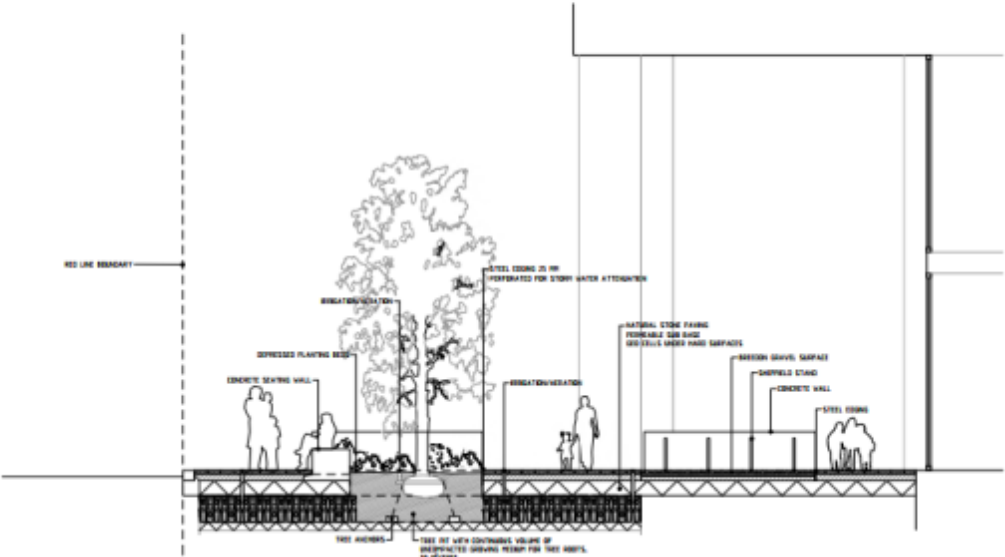
Proposed Landscaping (Ground Floor Meanwhile Uses)



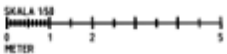
Ward Garden/Terrace and Northern Forecourt Section



WARD GARDEN/TERRACE TYPICAL SECTION
SECTION
1/50/PA1, 1/50/PA3



NORTHERN FORECOURT
SECTION
1/50/PA1, 1/50/PA3



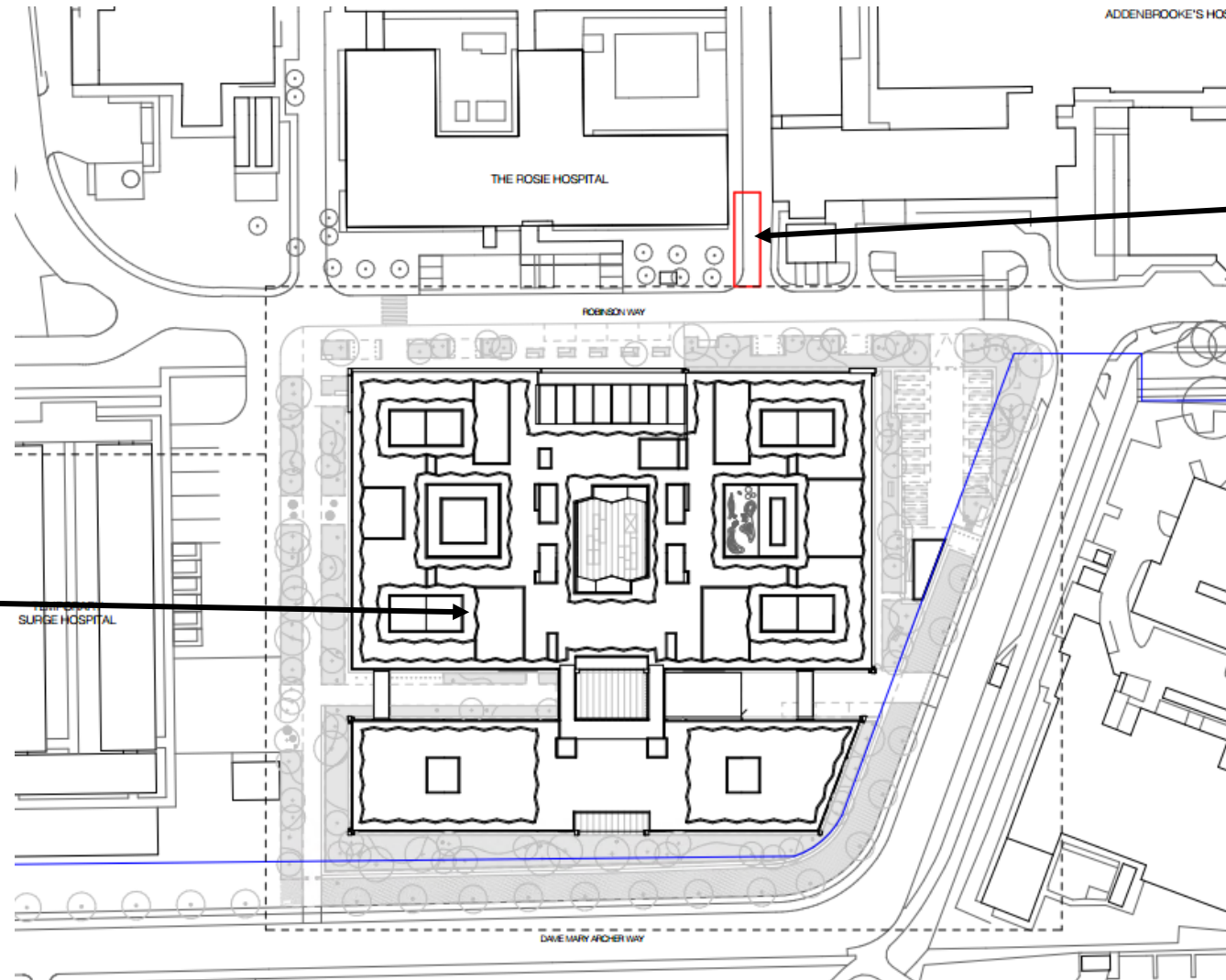
21/04337/FUL

Underground Service Corridor to serve the proposed new Cambridge
Children's Hospital, Cambridge Biomedical Campus
Plans Pack

Proposed development

- The application is for an Underground Service Corridor to serve the proposed new Cambridge Children's Hospital (21/04336/REM) and connect to the existing underground service network.
- The proposal includes flood mitigation measures.

Location Plan



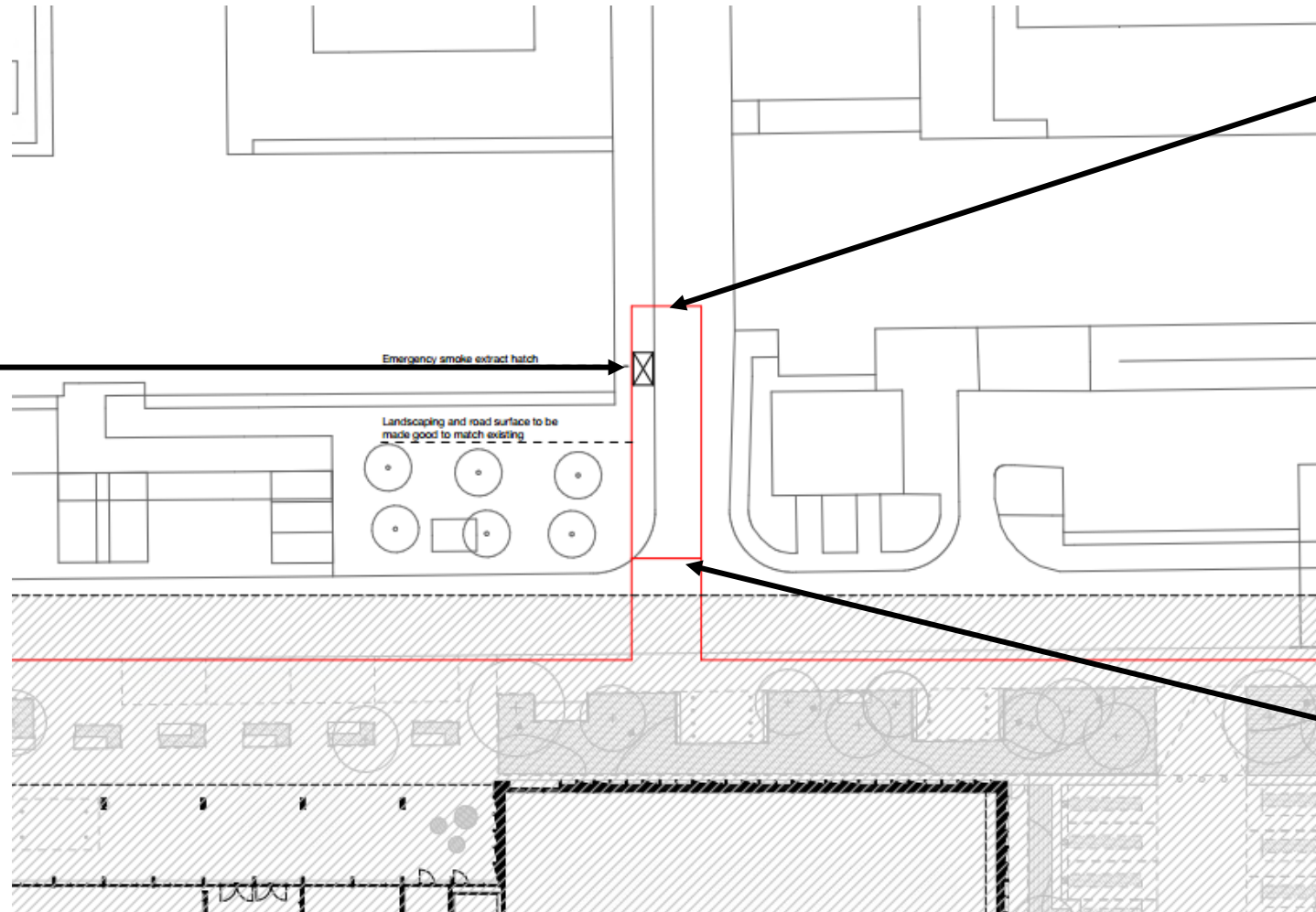
Underground
Service
Corridor

Page 6

Proposed
Cambridge
Children's
Hospital
(21/04336/REM)

Site Plan

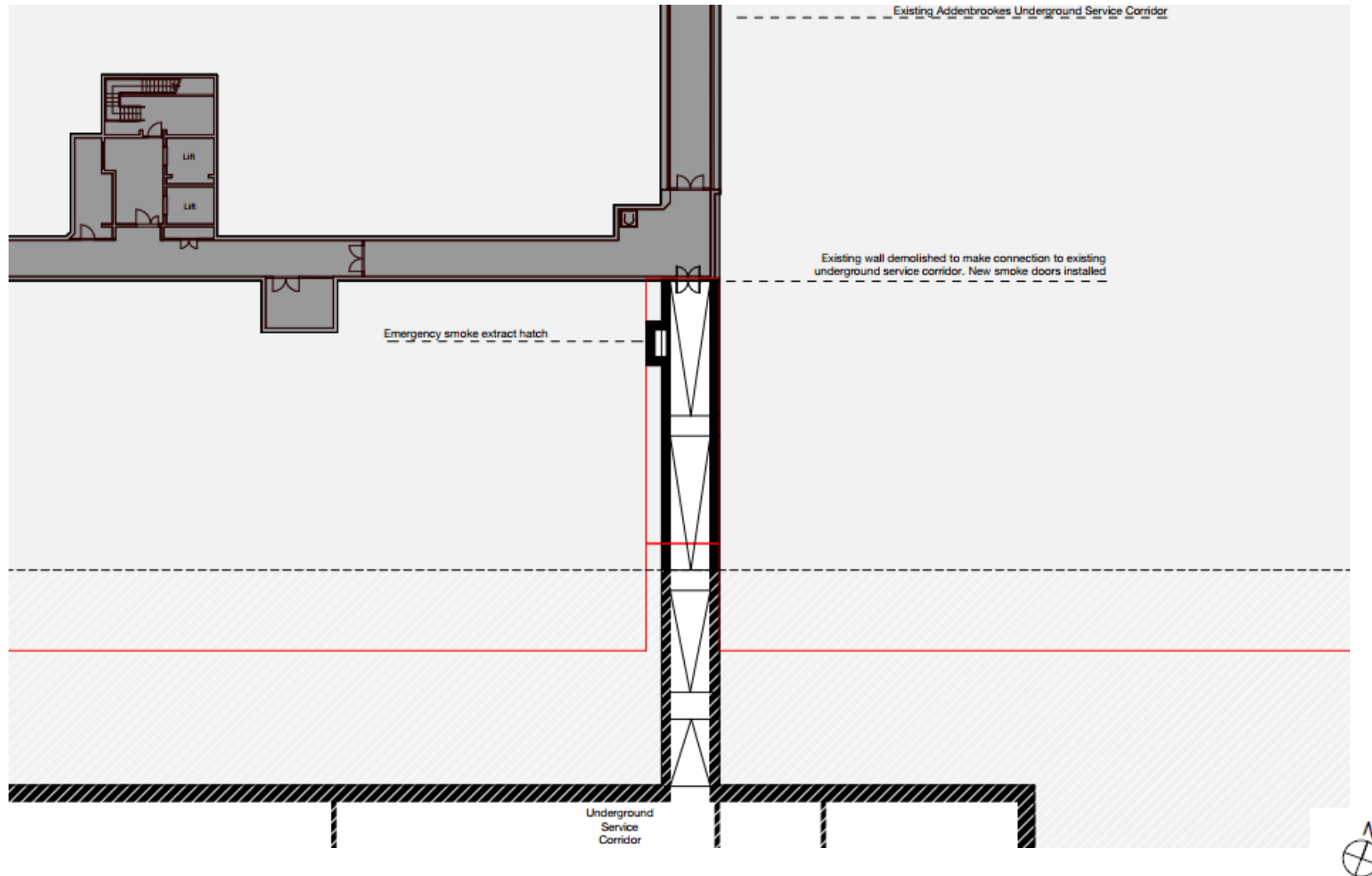
Emergency
smoke
extraction
Hatch



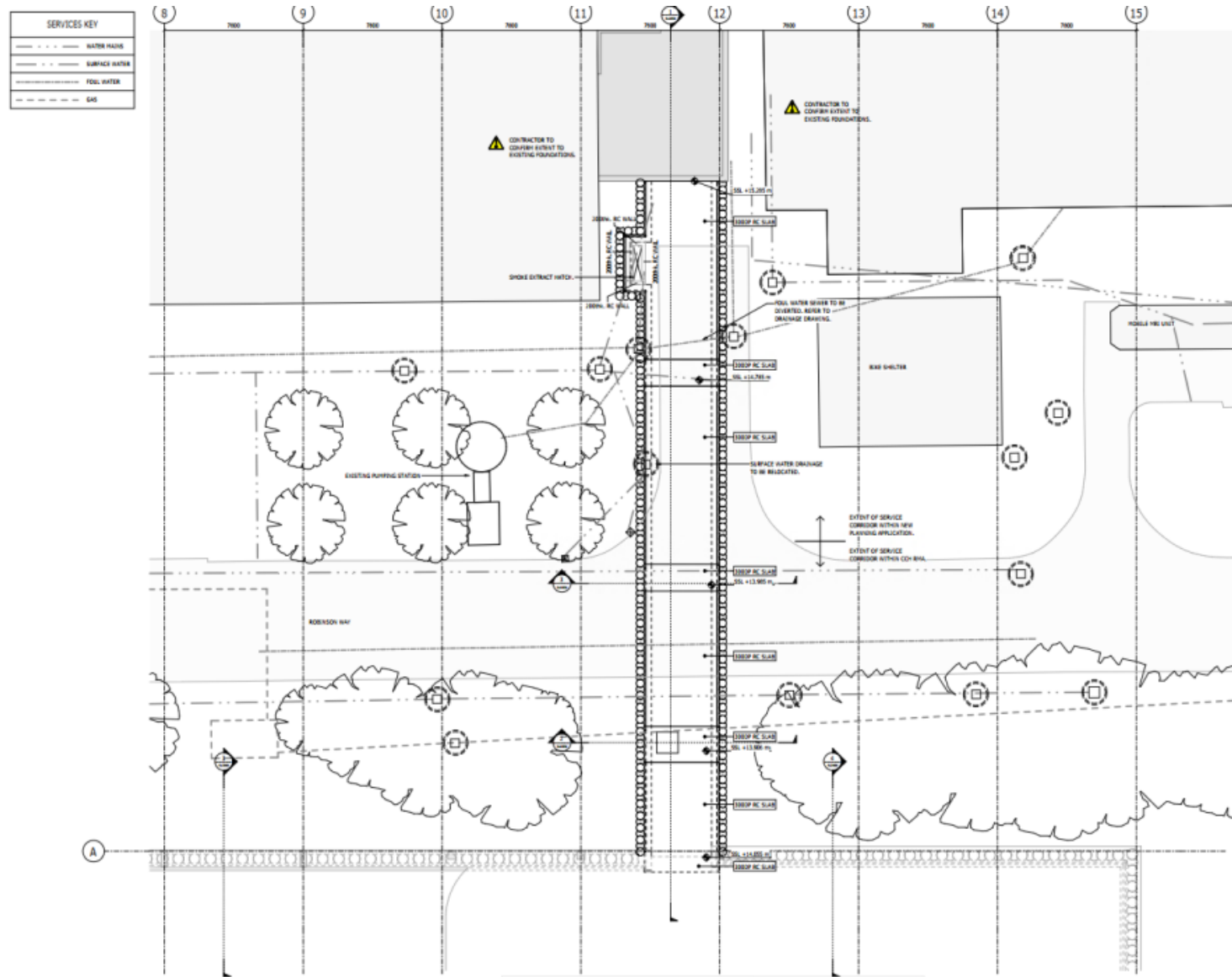
Link to
existing
underground
service
corridor

Link to
proposed
Cambridge
Children's
Hospital

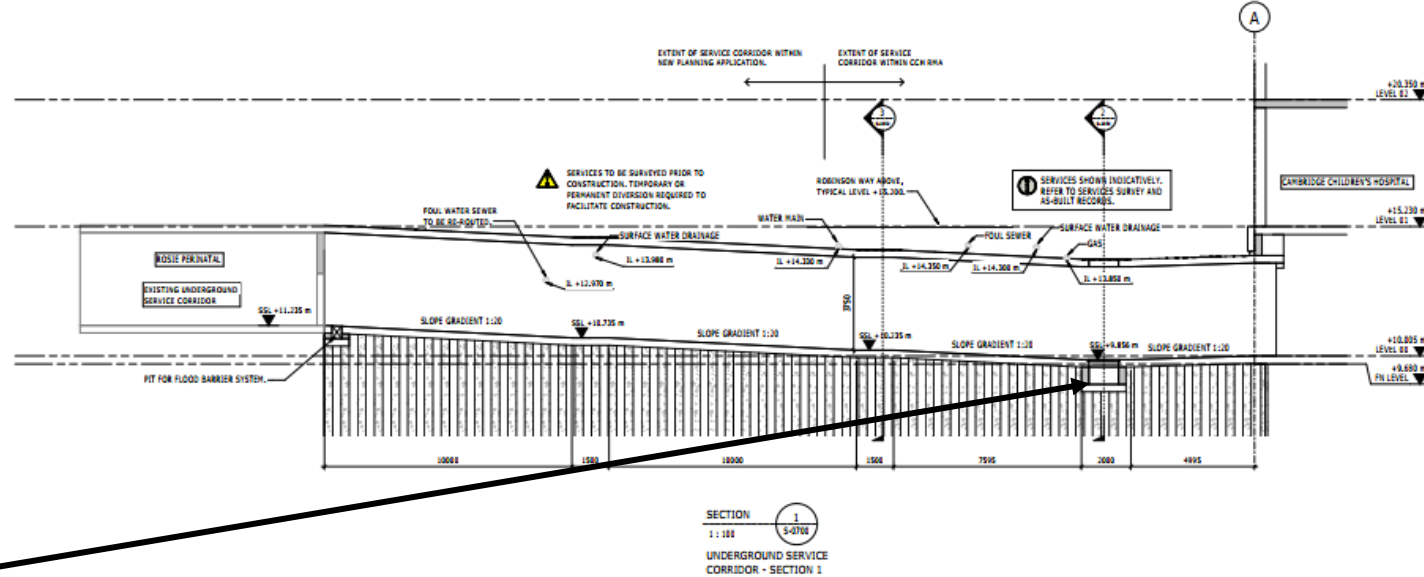
Basement Floor Plan



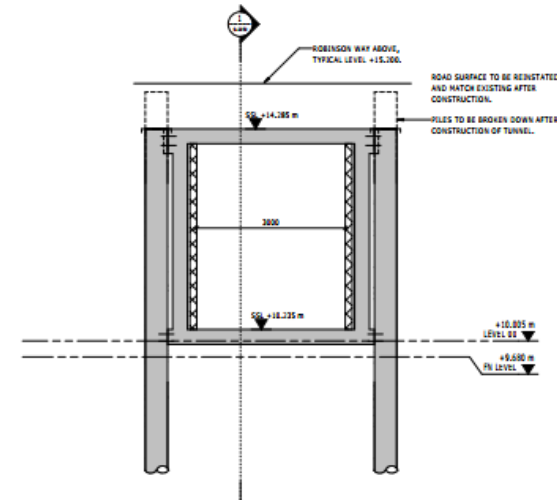
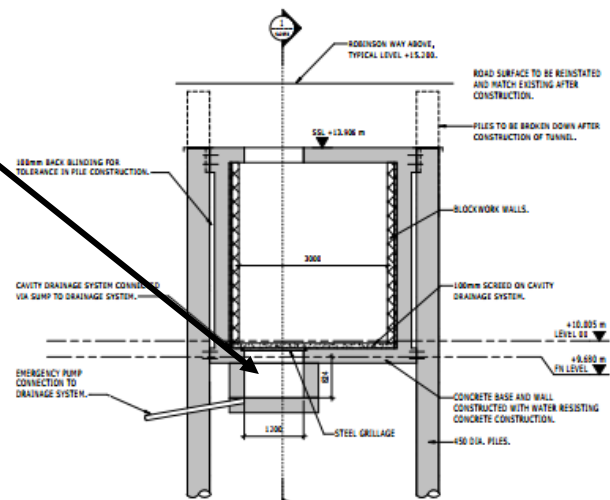
General Arrangement



Cross Sections



Emergency
Water
Collection
point and
connection
to drainage
system



This page is intentionally left blank